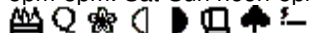


Minerva Hotel

10 Nelson Street
Open Mon-Thur 11am-11pm
Fri-Sat 11am-midnight
Sun noon-11pm
☎01482 210025

Tetley Bitter, Black Sheep Bitter, occasional guest

Includes England's smallest pub room. Views into Lincolnshire across the Humber and of The Deep. Outside patio area. No longer brews, despite sign. Food served Mon-Fri noon-2.30pm & 5pm-8pm. Sat-Sun noon-5pm.

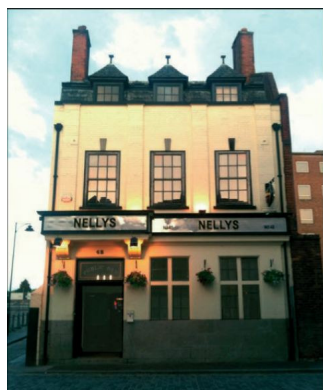


Mission

11-13 Posterngate
Open Mon-Sat 11:30am-midnight
Sun noon-3pm
☎01482 221187

Old Mill Traditional Bitter

Large pub converted from Seaman's Mission, incorporating the Chapel, which still has stained glass windows. Food served Mon-Thur 11:30am-2pm, Fri-Sat 11:30am-2pm, Sun noon-2pm.



Nelly's Bar

48 High Street
Open daily noon-11pm
☎01482 225212

3 – 5 real ales and 1 – 3 real ciders

Old town pub. Comfortable seating and lots of standing room on two levels. Table football. Music can be loud. Disabled toilets downstairs only. *Good Beer Guide Listed 2011.*



New Clarence

77 Charles Street
Open Mon-Fri noon-11pm
Sat 11am-midnight
Sun noon-10:30pm
☎01482 320327

Taylor Landlord, Tetley Bitter, 1 or 2 guest beers

Large one roomed food-dominated pub. Major sports are shown. Note "Old Clarence" on the pub sign. Food served noon-7pm daily.



Old Blue Bell

Market Place
Open Mon-Sat 11am-11pm
Sun noon-10:30pm
☎01482 324382

Samuel Smith Old Brewery Bitter

Reached down an alley, this old town pub is a Sam Smith's tied house. There are several small rooms, including a snug at the front of the building.



Old Bull 'N' Bush (not on map)

56 Green Lane
Open Mon and Wed 1pm-11pm
Closed Tue and Thur
Open Fri-Sun 1pm to midnight
☎01482 327661

Tetley Bitter. Black Sheep Bitter, occasional guest

Formerly the Lockwood Arms. Two roomed, it was built to serve the nearby former Cannon Street Station.



Old English Gentleman

22 Worship Street
☎01482 324659
Bank's Bitter, Marston's Bitter, plus two from Marston's portfolio.
Grade II Listed Building close to New Theatre displaying many pictures of famous actors. Jennings often available.

Old White Hart

Alfred Gelder Street
☎01482 228136
Draught Bass and Flowers IPA.
Large and impressive pub just before Drypool Bridge. Restaurant upstairs.

Punch Hotel

Queen Victoria Square
☎01482 325245
Marston's Pedigree or Old Empire and another from Marston's range.
Spectacular exterior and sympathetically refurbished interior.

North Hull Pubs

(for map see back page)

Stagecoach bus 15 and East Yorkshire Motor Service (EYMS) bus 115 run from town to Spring Bank, Princes Avenue and Newland Avenue.

Stagecoach bus 28 and EYMS bus 121 run from the city centre up Beverley Road.

Stagecoach bus number 13 runs along Chanterlands and Bricknell Avenues, passing the base of National Avenue.

Avenue (not on map)

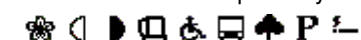
100 Chanterlands Avenue
Open Sun-Thur noon-11pm
Fri and Sat noon-midnight

☎01482 498961

Bass and Black Sheep Bitter plus one guest, usually Batemans XXXB

Large food orientated pub with large lounge at front and bar at back of pub.

Small outdoor sitting and smoking area. Darts and pool table. Big screens. Food served noon-9pm daily.



Cross Keys (not on map)

Endike Lane / Beverley Road
Open Mon-Thur noon-11pm
Fri-Sat noon-midnight
Sun noon-11pm

☎01482 801169

2 guest beers.

Thirties pub with live music. Food served Mon-Fri noon-2pm and 5 pm-9pm, Sat-Sun noon-7pm.



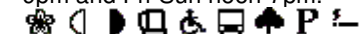
Gardeners Arms

35 Cottingham Road
Open Sun & Mon noon-midnight
Tue-Sat 11am-midnight

☎01482 342396

Tetley Bitter, 3-4 guests

Original front bar retains matchwood ceiling and has an ale house style. Large rear bar has pool tables and TV screens. Covered outdoor drinking area at front. Food served Mon-Thur noon-9pm and Fri-Sun noon-7pm.



Hole in the Wall

115 Spring Bank
Open Mon-Thur 2pm-11pm
Fri & Sat noon-11pm
Sun noon-10:30pm

☎ No telephone

Rooster's Yankee and guest

This two roomed pub was converted from a former amusement arcade. The front bar has comfortable bench seats while the rear bar has a large-screen TV and pool table.

